



*Let Things Better,
Faster and Vital*

Windows Driver Manual

Rev. 1.0

iMOVE 3/iMOVE 3pro

Contents

1.Manual Information.....	1
2.Operating System(OS) Environment.....	1
3.Windows Driver Preparation.....	1
4.Windows Driver Installation.....	2
5.Detailed Windows Driver Setting.....	5
5.1 Printing Preferences.....	5
5.2 Other Settings.....	8
6.Uninstall Windows Driver.....	11
7.Specification.....	13
7.1 Resolution.....	13
7.2 Paper Size.....	13

1.Manual Information

This Windows Driver Installation Manual provides information on installation and usage of the printer's Windows Driver according to PC operating system (OS).

We maintain ongoing efforts to enhance and upgrade the functions and quality of all our products. As follow, product specifications and/or user manual content may be changed without prior notice.

2.Operating System(OS) Environment

The following operating systems are supported for usage.

- Microsoft Windows 10 (32 bit/64 bit)
- Microsoft Windows 8 (32 bit/64 bit)
- Microsoft Windows 7 SPI (32 bit/64 bit)
- Microsoft Windows Vista SP2 (32 bit/64 bit)
- Microsoft Windows XP Professional SP3 (32 bit)

3.Windows Driver Preparation

The Windows Driver is included in the enclosed CD.

The installation file name is iDPRT iMOVE Series Driver-VX.X.X.X.exe
eg : iDPRT iMOVE Series Driver-V1.3.2.0.exe

4.Windows Driver Installation



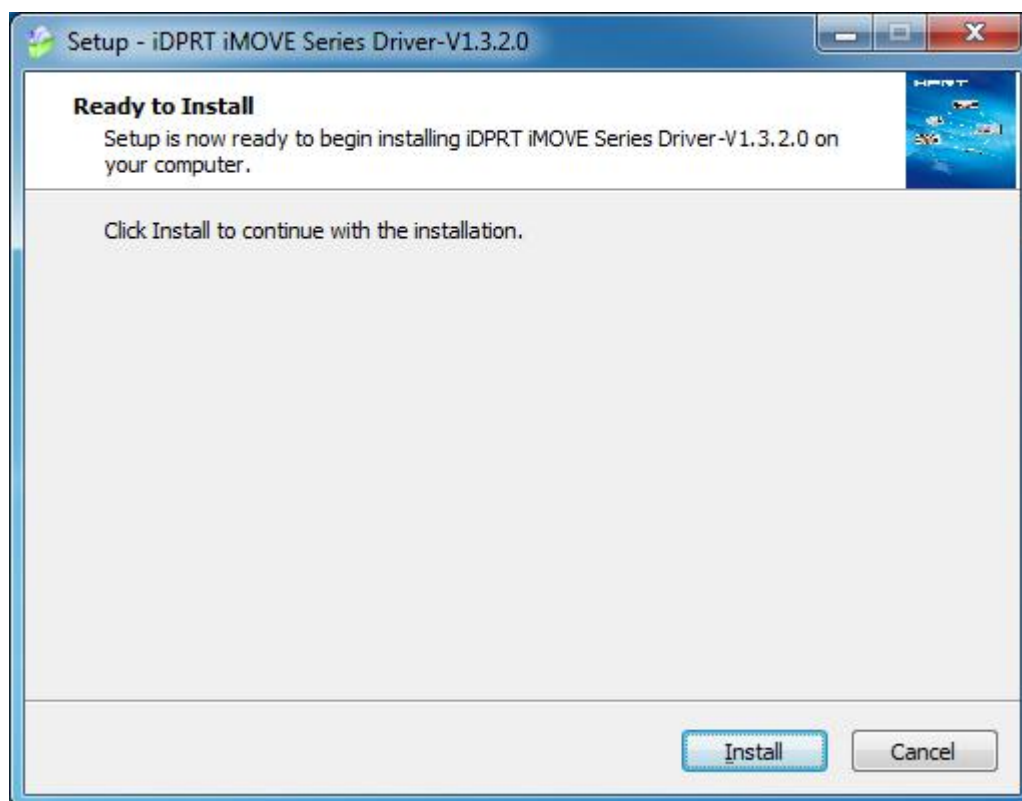
Warning: Under different operating system, the screen has slight difference. Please operate it according to the tips. Take iDPRT iMOVE 3 (Windows 7) as example.


1.Double click Windows Driver. 

2.Choose “English” and click “OK”.



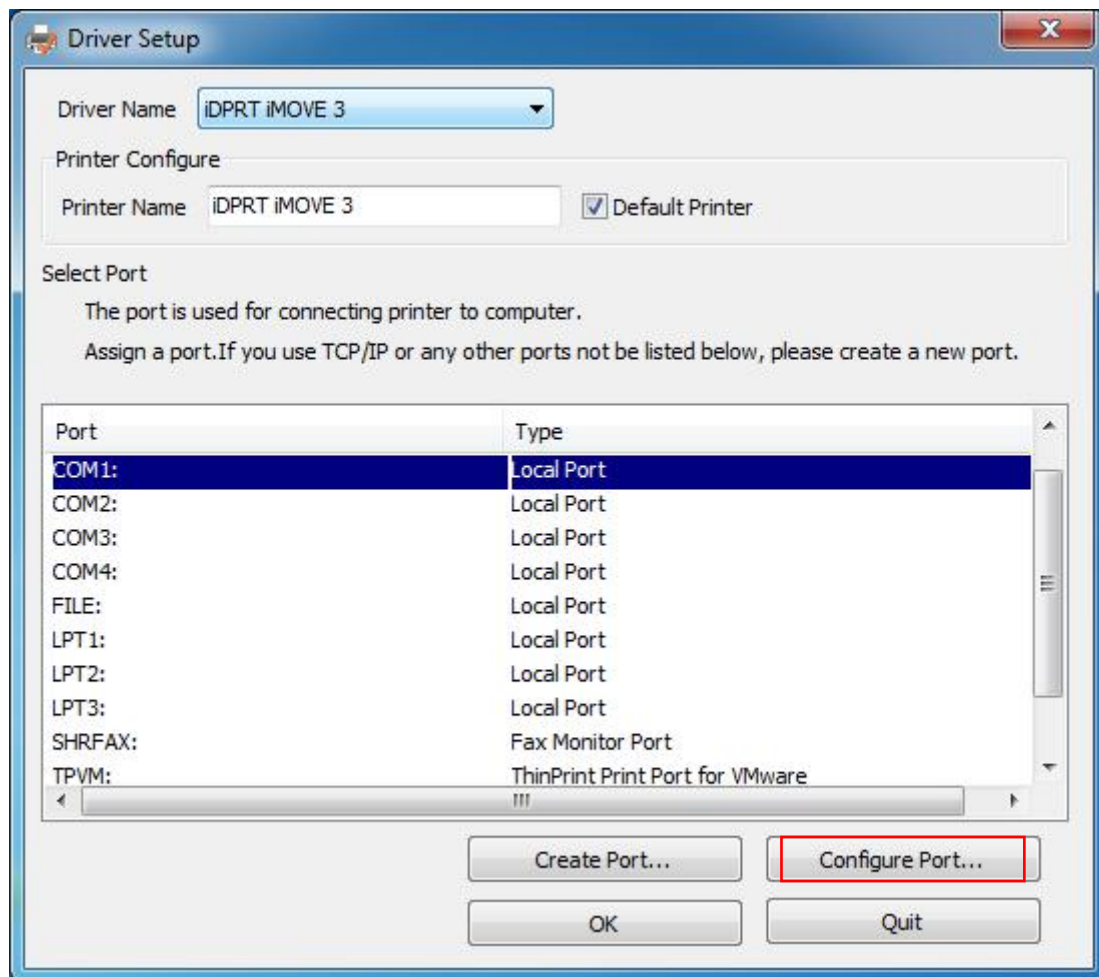
3. Click “Install”.



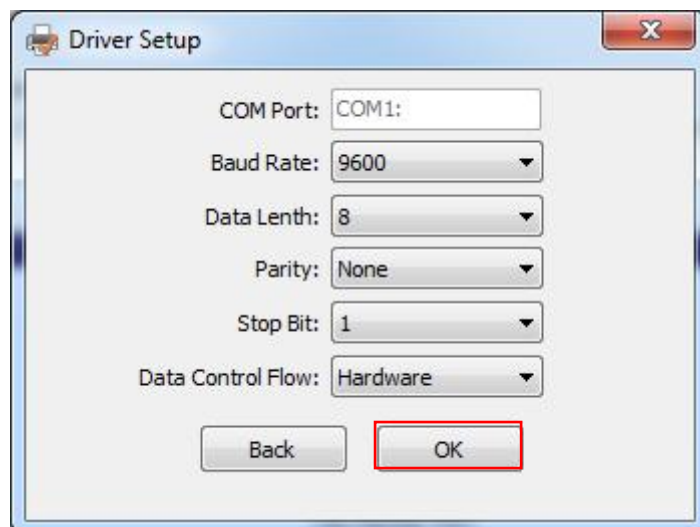
 **NOTE:** If printer is already connected with computer by USB port, it only needs to click “Install”, then it will be installed automatically. Otherwise, proceed to the next step.

4. Choose the matched type and port. (USBxxx is for USB port ,COMx is for serial port, LPTx is for parallel port).

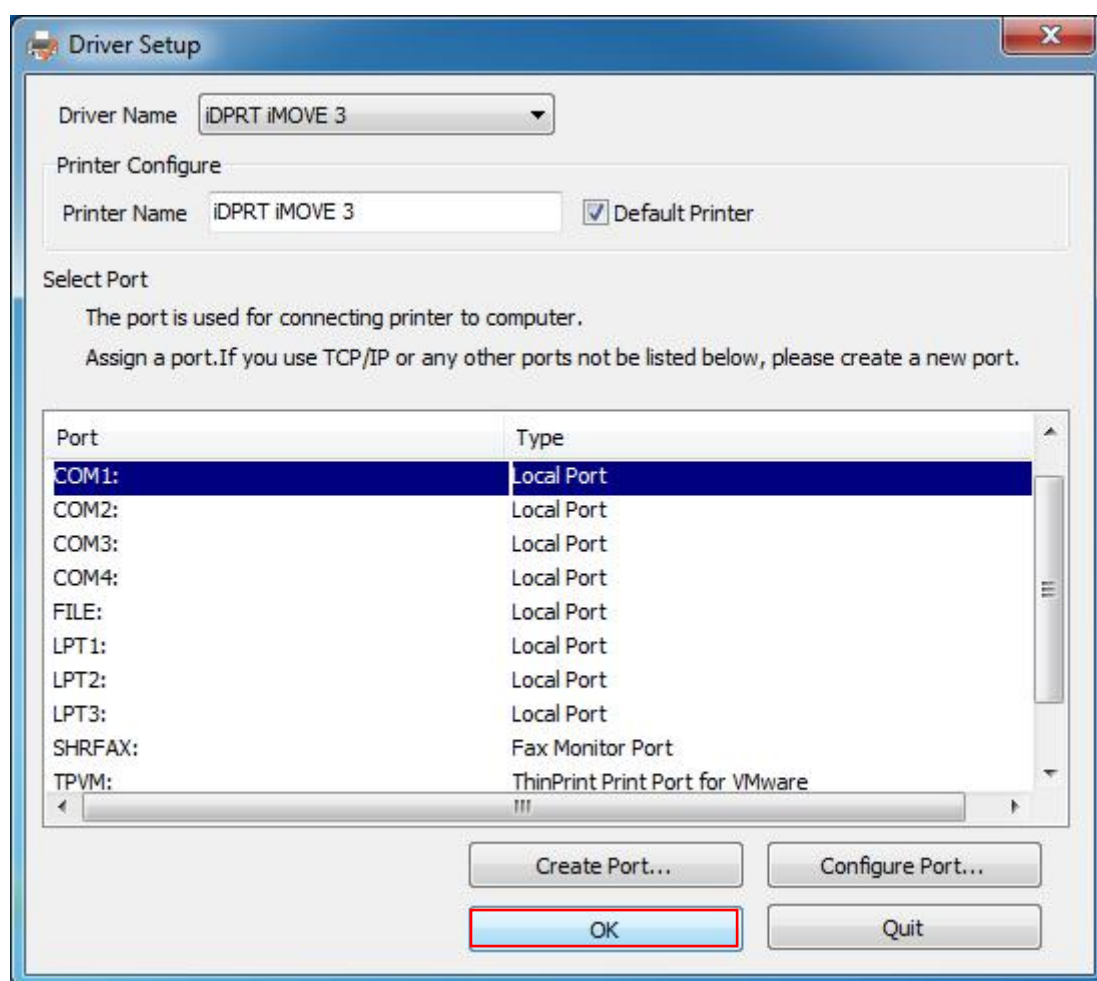
For example, choose “COM1” as port. Click “Configure Port”.



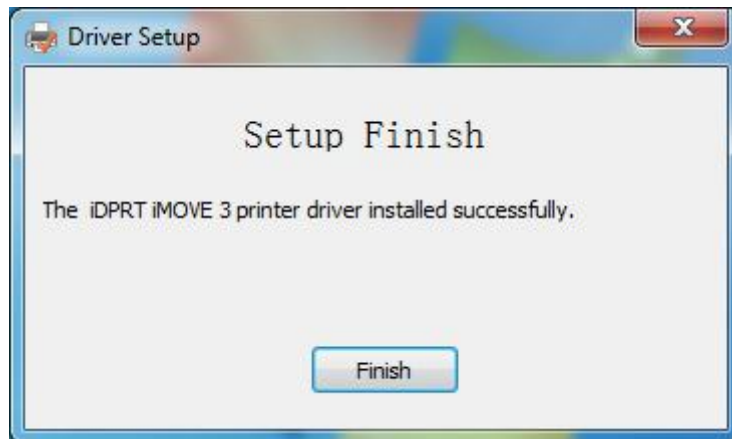
5. Complete the parameter setting.



6. Click "OK".




7. Click "Finish". iDPRT iMOVE 3 printer driver installed successfully.



8. After installation, the icon will be found in "Start" → "Devices and Printers".

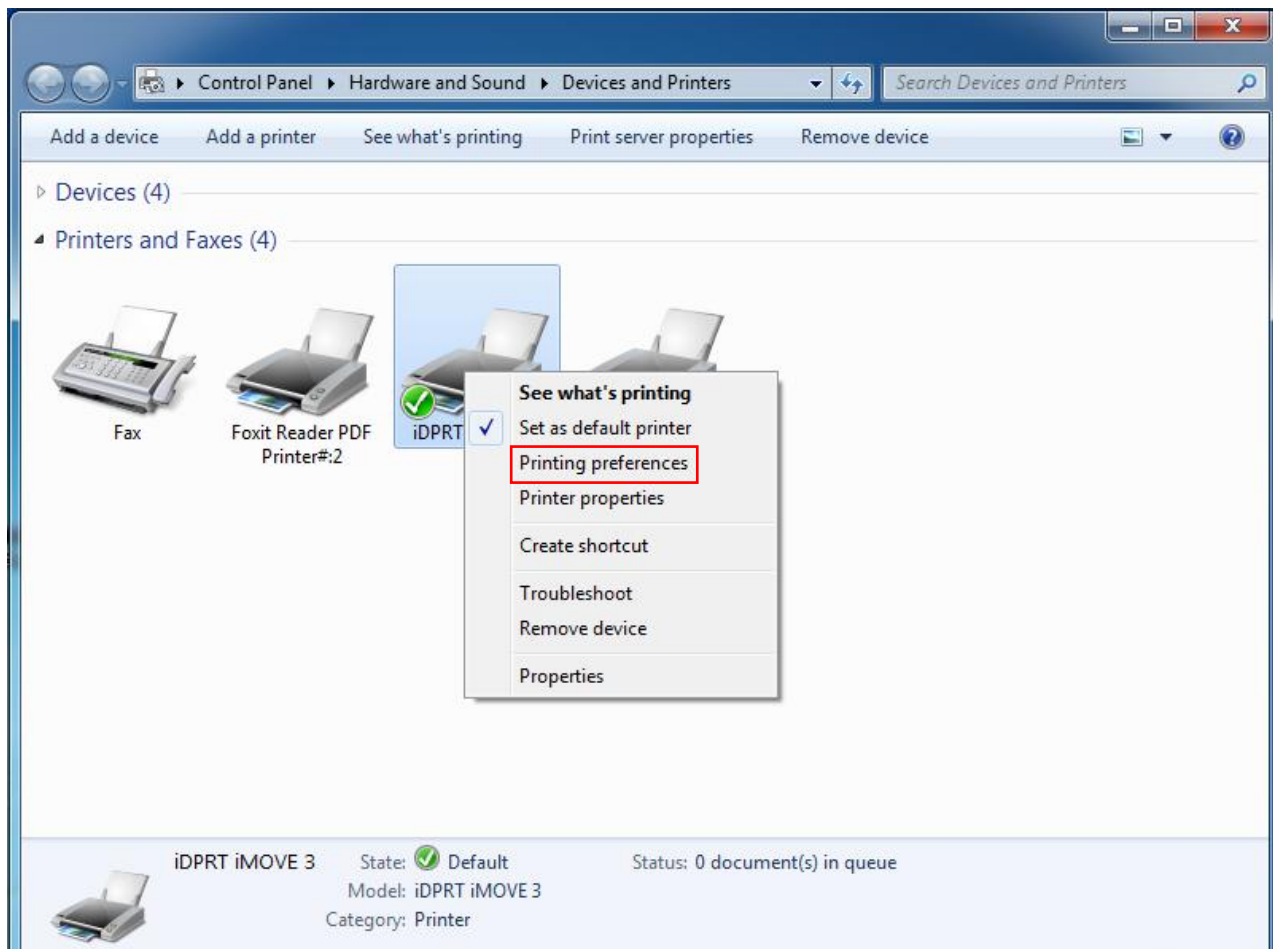


 NOTE: If you already installed the driver (No matter what kind of port), when you connect the printer with computer, it will create a USB port automatically.

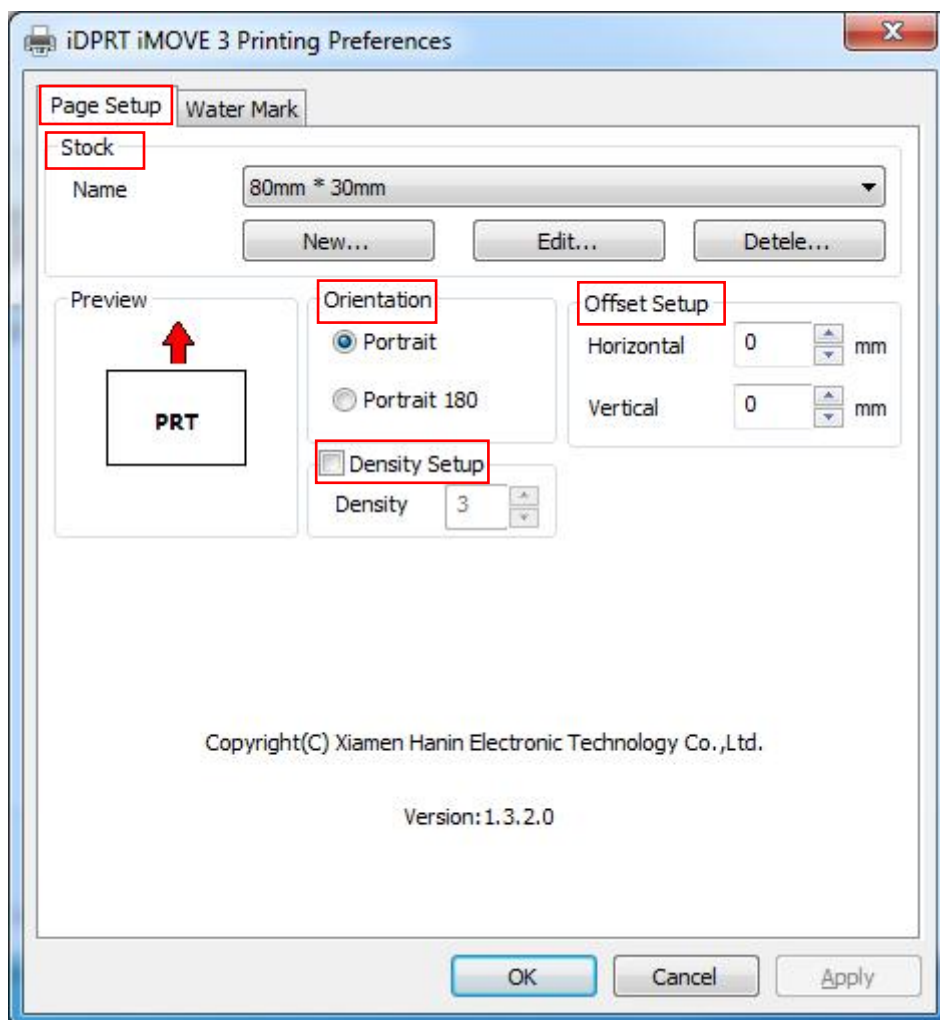
5.Detailed Windows Driver Setting

5.1 Printing Preferences

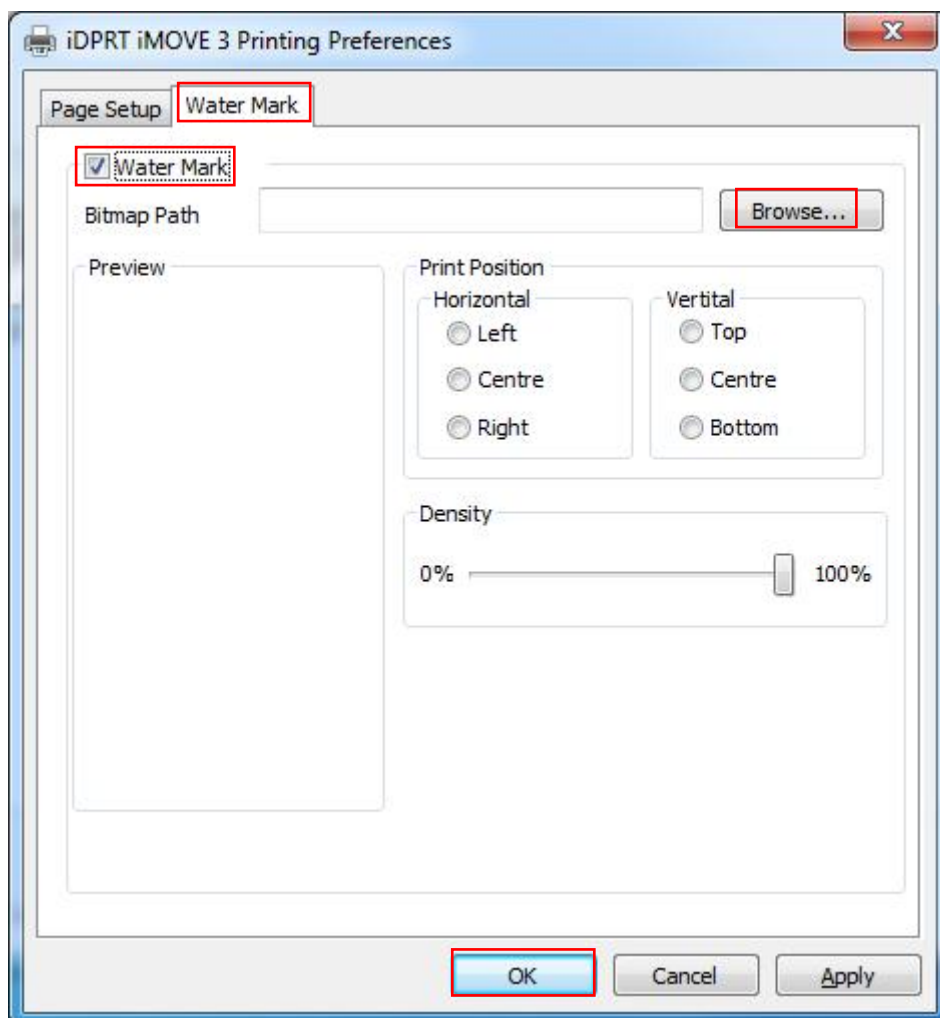
1.Click "Start"→"Devices and Printers". Right click "iDPRT iMOVE 3" and choose "Printing preferences".



2. According to the different needs, choose "Stock" \ "Orientation" \ "Offset Setup" \ "Density Set" in "Page Setup".

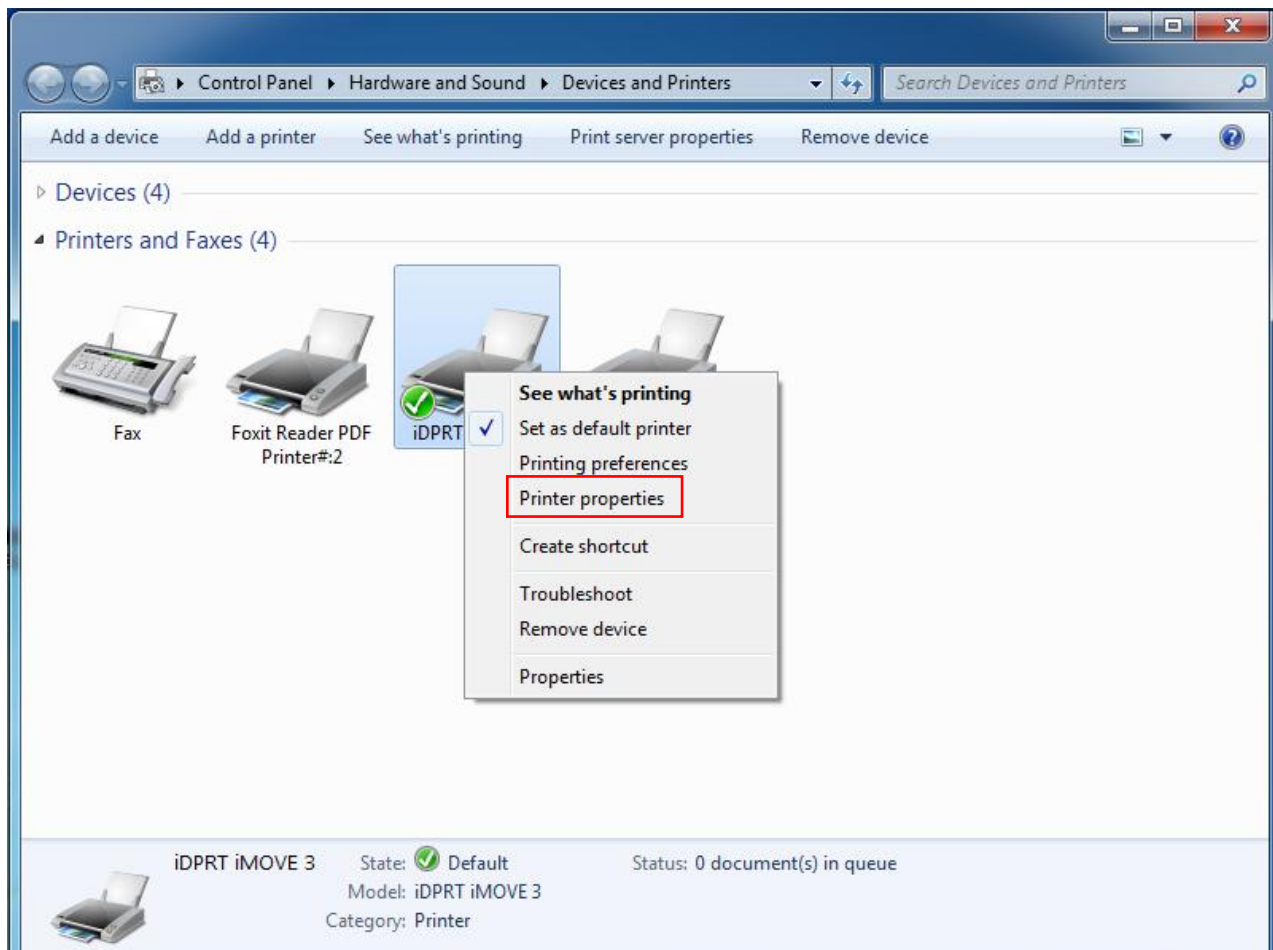


3. Choose "Water Mark" in "Water Mark", and then click "Browse..." to add the image files. Click "OK" to save it.

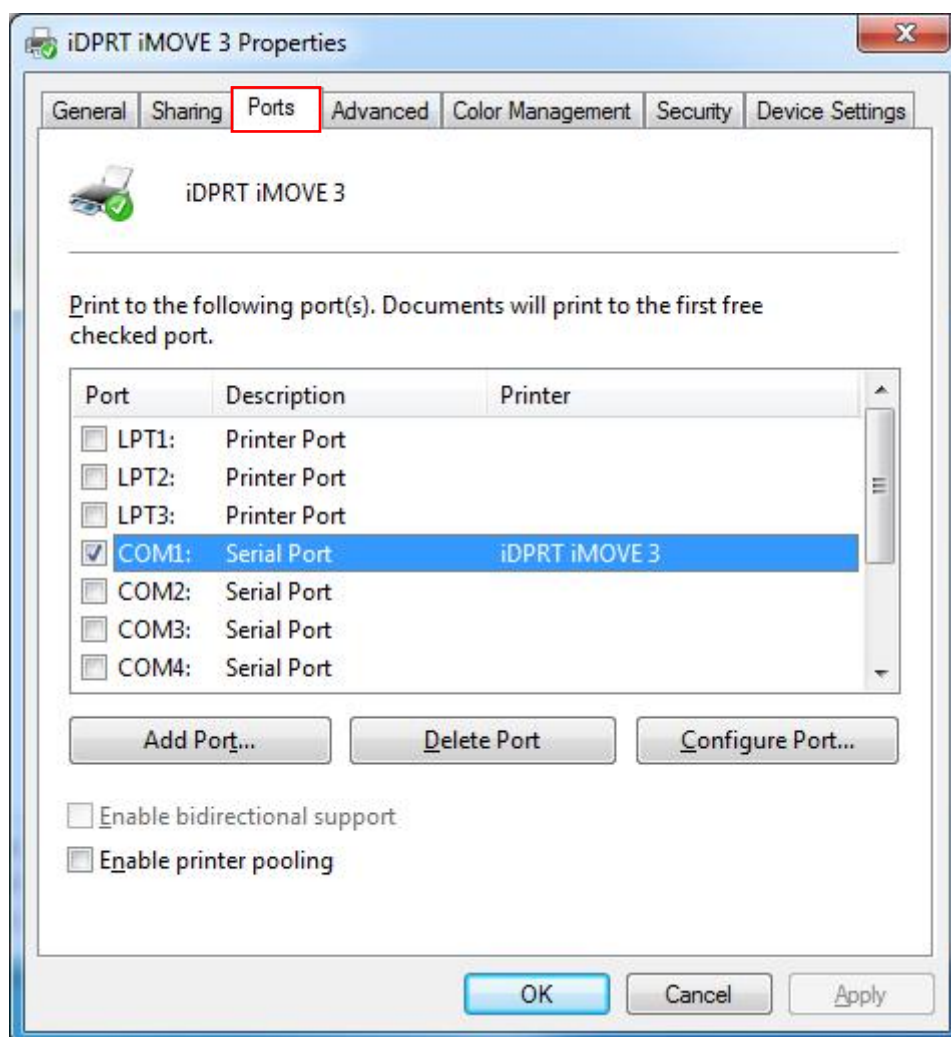


5.2 Other Settings

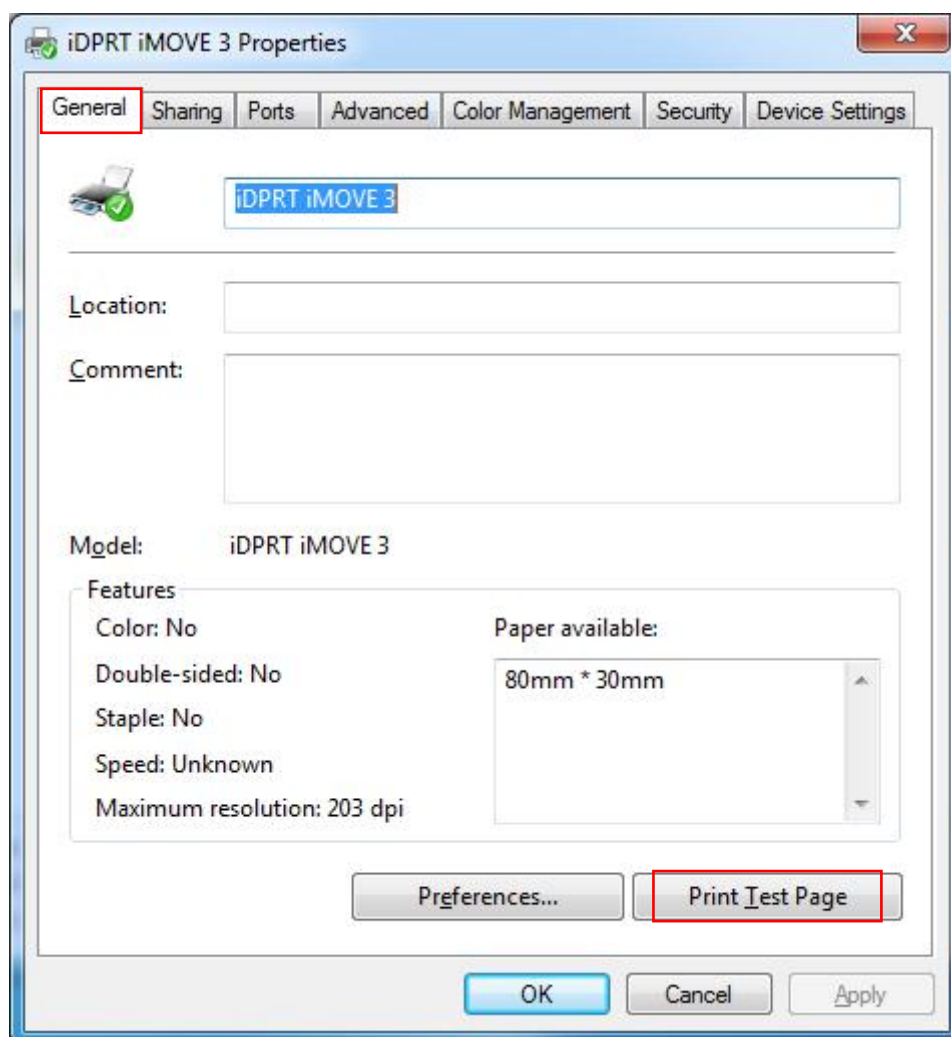
1. Click "Start" → "Devices and Printers". Right click "iDPRT iMOVE 3" and choose "Printer properties".



2. Click “Ports” to set following items.



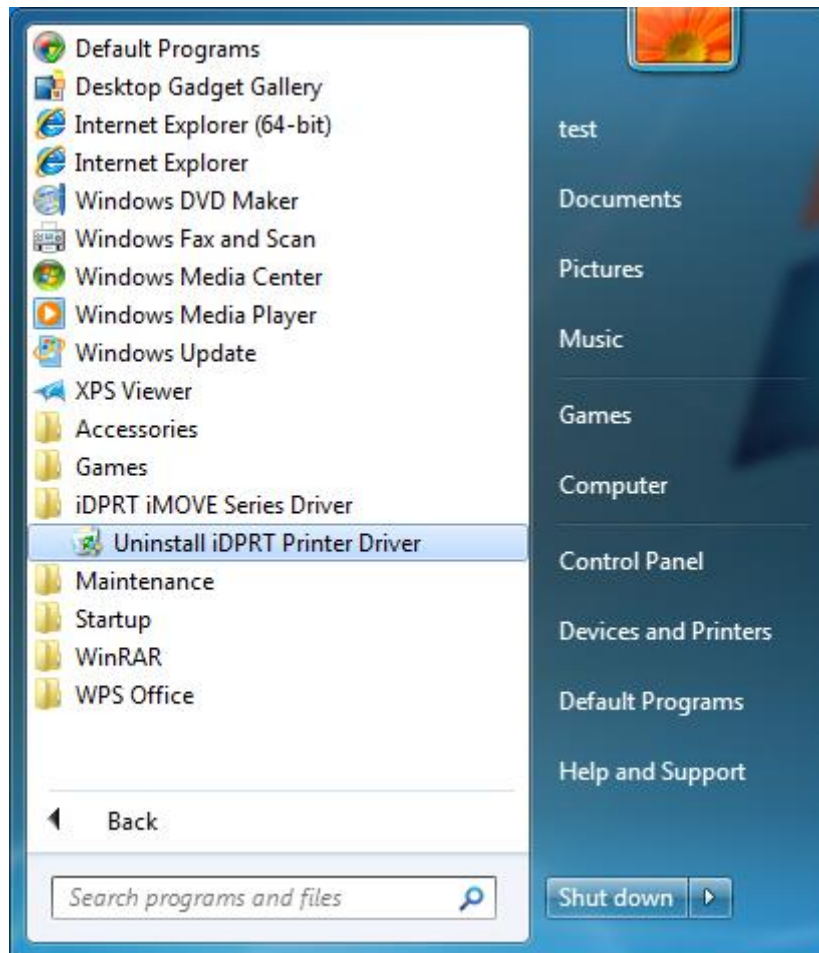
3. Click "General" → "Print Test Page" to check the status of the printer.



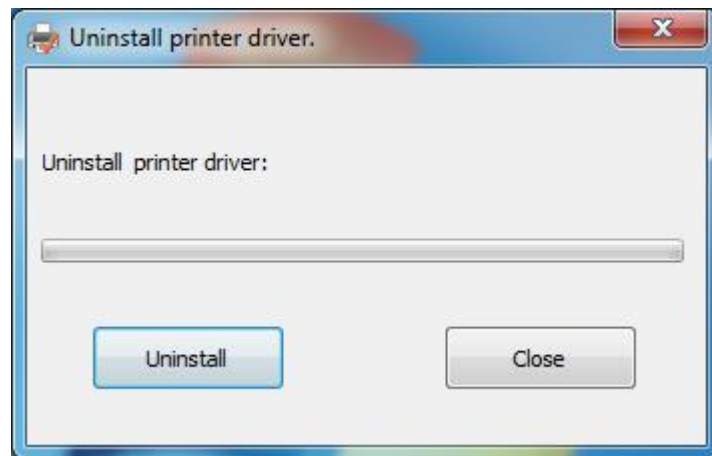
4. If the printer can print a test page correctly, then the driver is installed correctly.

6.Uninstall Windows Driver

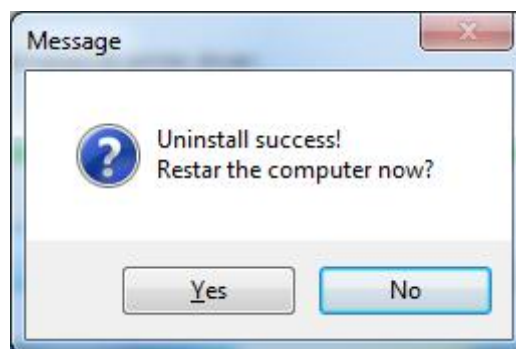
1.Click "Start"→"All Programs"→"iDPRT iMOVE Series Driver" →"Uninstall iDPRT Printer Driver".



2.Click “Uninstall”.



3.Click “No”. Then it is complete to uninstall.



7.Specification

7.1 Resolution

iDPRT iMOVE 3 : 203×203dpi

iDPRT iMOVE 3pro : 203×203dpi

7.2 Paper Size

Default : 80×30mm

Note: You can customize paper size.